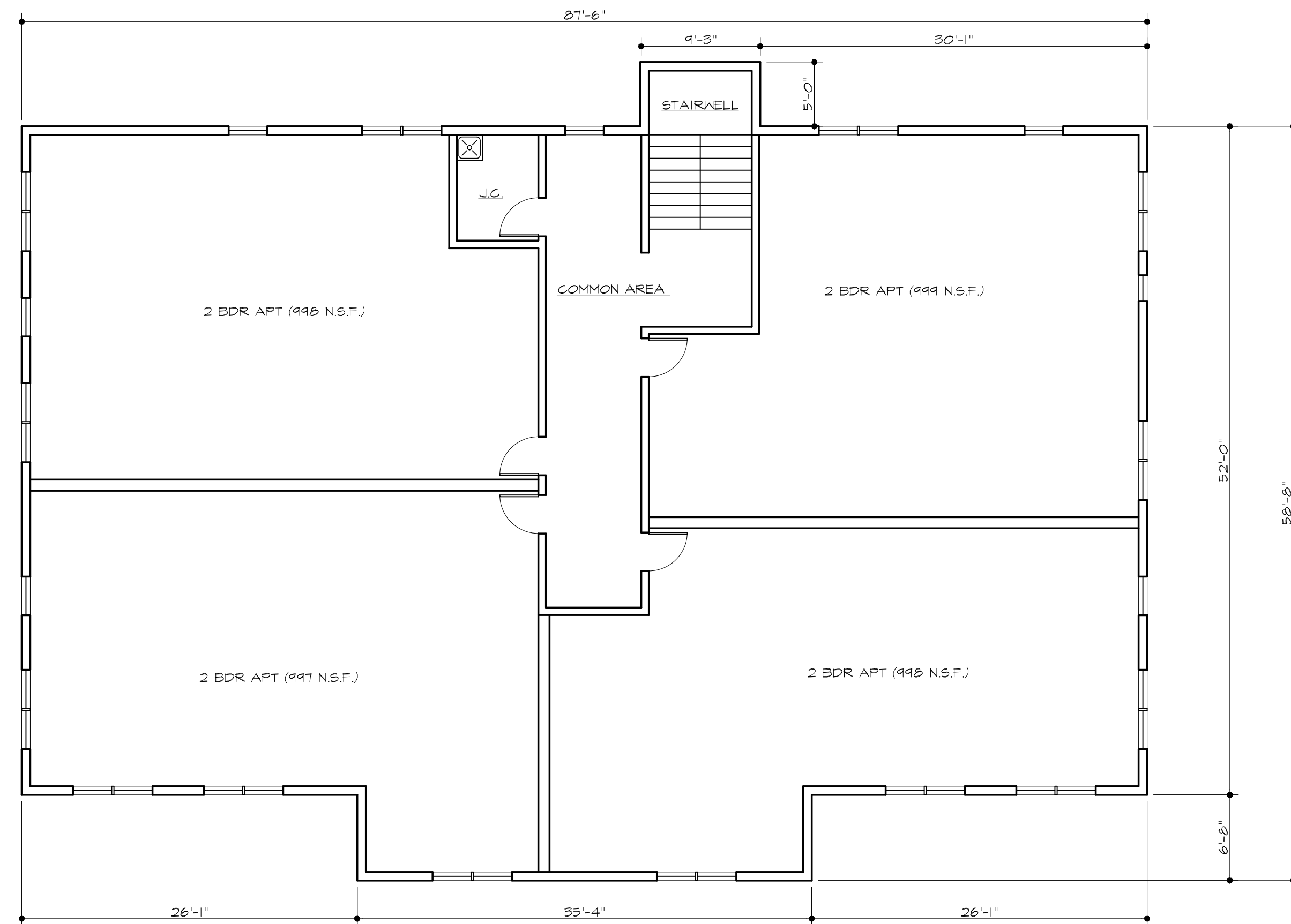
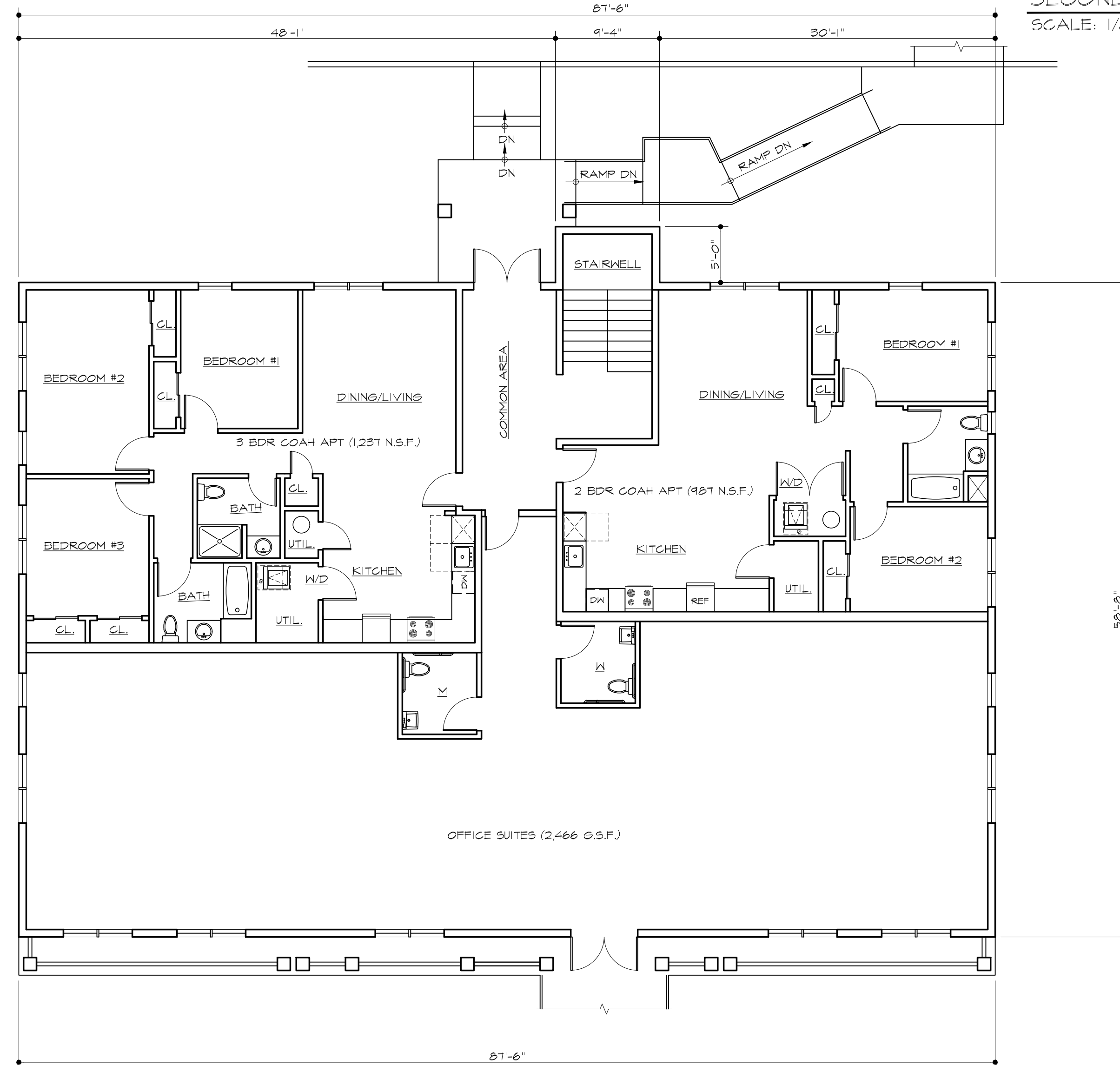


PRELIMINARY
THIRD FLOOR PLAN (GFA 2,438 SF)
SCALE: 1/8"=1'-0"



PRELIMINARY
SECOND FLOOR PLAN (GFA 4,832 SF)
SCALE: 1/8"=1'-0"



PRELIMINARY
GROUND FLOOR PLAN (GFA 5,180 SF)
SCALE: 1/8"=1'-0"

- FLOOR PLAN NOTES:
- TOTAL GROSS FLOOR AREA 12,450 SF
 - DWELLING UNITS PROVIDED: (1) 2 BRD AND (1) 3 BEDROOM (THE GROUND FLOOR DWELLING UNITS ARE HC ACCESSIBLE AND COAH DESIGNATED).
 - GROUND FLOOR GROSS OFFICE FLOOR AREA IS 2,466 SF.

MISCELLANEOUS REVISIONS AND REISSUED FOR COMPLETENESS REVIEW	10-27-21	▲
ISSUED FOR MUNICIPAL REVIEW AND APPROVAL	9-20-21	
REVISION	DATE	NO.

DATUM ELEVATION 0'-0" =

PRELIMINARY FLOOR PLANS

PROPOSED MIXED USE BUILDING
BLOCK 11606, LOTS 11 & 12
224-226 MAIN AVENUE
LONG HILL, NJ 07460



1130 Route 202 South
Building B, Suite 5
Arlinton, NJ 08859-1454
Phone: (908) 707-8100
Fax: (908) 707-8484
info@architectplus.com

Rocco Campanella, RA
NJ Reg. No. 09178
NY Reg. No. 019838
PA Reg. No. B-11734

Marc T. Maron, RA
NJ Reg. No. 10919
© 2021 Architecture PLUS, pc

SCALE : AS NOTED

DRWN BY : RC CHKD BY : rc

DATE : 9/20/21

PROJ. NO. : 21-065

DWG. NO. : A1p of 2



PRELIMINARY
REAR ELEVATION
SCALE: 1/8"=1'-0"



PRELIMINARY
LEFT SIDE ELEVATION
SCALE: 1/8"=1'-0"



PRELIMINARY
RIGHT SIDE ELEVATION
SCALE: 1/8"=1'-0"
NOTE: LEFT SIDE ELEVATION SIMILAR



PRELIMINARY
FRONT ELEVATION
SCALE: 1/8"=1'-0"

MISCELLANEOUS REVISIONS AND REISSUED FOR COMPLETENESS REVIEW	10-27-21	▲
ISSUED FOR MUNICIPAL REVIEW AND APPROVAL	9-20-21	

REVISION	DATE	NO.
----------	------	-----

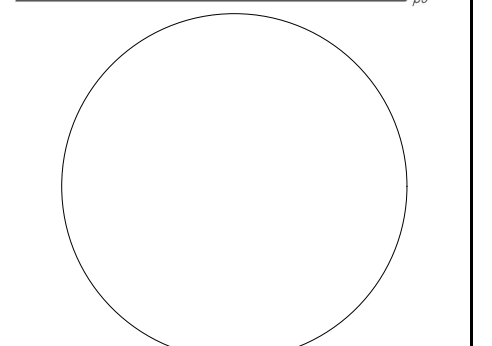
DATUM ELEVATION 0'-0" =

PRELIMINARY
BUILDING ELEVATIONS

PROPOSED
MIXED USE BUILDING
BLOCK 11606, LOTS 11 & 12
224-226 MAIN AVENUE
LONG HILL, NJ 07460



1130 Route 202 South
Building B, Suite 5
Raritan, NJ 08869-1404
Phone: (609) 707-8100
Fax: (609) 707-8484
info@architectureplus.com



Rocco Campanella, RA NJ Reg. No. 09178
NY Reg. No. 019838
PA Reg. No. B-11734

Marc T. Marion, RA NJ Reg. No. 10919

© 2021 Architecture Plus, pc

SCALE : AS NOTED

DRWN BY : RC CHKD BY : rc

DATE : 9/20/21

PROJ. NO. : 21-065

DWG. NO. : A2p of 2