

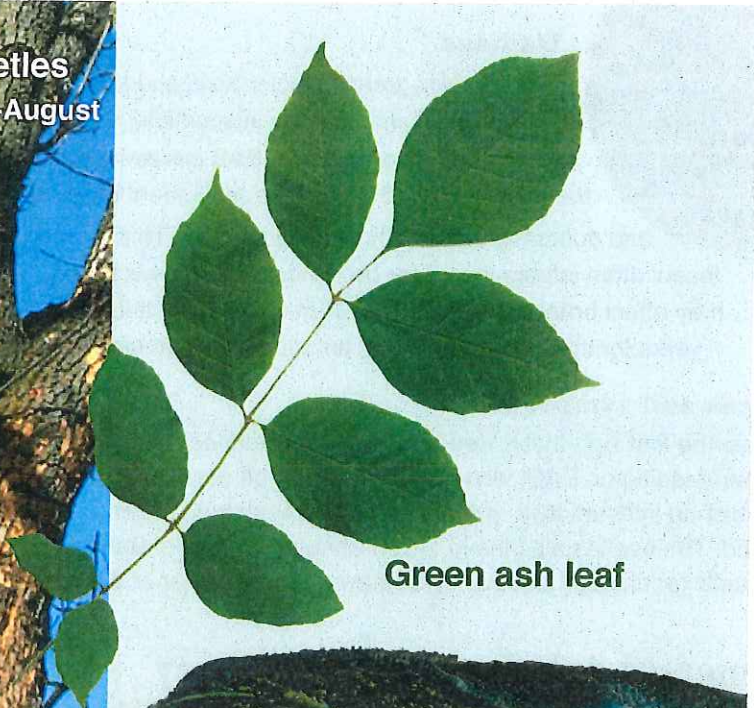
Check your **Ash Trees**

For the **Tree-Killing** Emerald Ash Borer

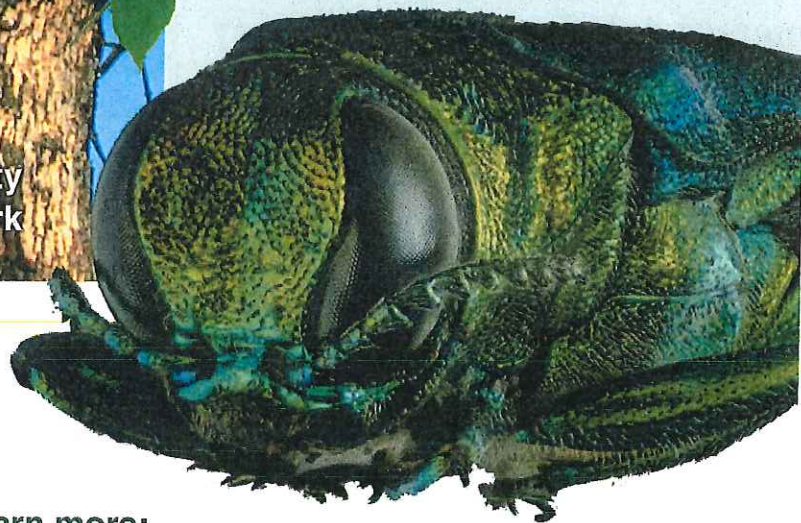


Adult beetles
found May-August

Woodpecker activity
and flecking on bark



Green ash leaf



learn more:
www.emeraldashborer.nj.gov

Pest Alert

Emerald Ash Borer *Agrilus planipennis*



The exotic emerald ash borer (EAB) has been killing ash trees across North America. Native to China, eastern Russia, Japan, and Korea, it was first discovered near Detroit in 2002 and has since spread to 25 states, including New Jersey.



Damage

This metallic green insect infests and kills ash trees—all ash species are susceptible, with the exception of mountain ash. EAB larvae feed on the inner bark and disrupt the movement of water and nutrients, essentially girdling the tree. This insect often infests the upper branches of the tree first and may affect branches as small as 1" in diameter. It takes 2-4 years for infested trees to die, but mortality is imminent.

Images by David Cappaert



Adult beetle



D-shaped exit hole



Larva



Woodpecker damage on an EAB infested tree

Signs and symptoms

Often the first sign that a tree is infested is woodpecker damage.

When feeding on EAB, woodpeckers scrape off outer bark, leaving smooth, light colored patches. Under the bark of an infested tree, you can often see S-shaped galleries weaving back and forth on the surface of the wood. The beetles also leave 1/8" D-shaped exit holes. Between May and August, you may find the 1/2" long metallic green adult beetles which have a copper color abdomen under the wing covers.

Emerald Ash Borer in New Jersey

Since its discovery in North America, EAB has spread rapidly. It occurs in 25 states and 2 Canadian provinces. It was first discovered in NJ in 2014. The greatest impact will be for community trees and privately owned trees.

The beetles are strong fliers, and good at finding ash trees. When the beetle first arrived in Maryland, the infested area expanded about 1/2 mile per year.

Often people unintentionally spread this insect when they move firewood from an infested area to a new location. Beetles and larvae also hitchhike to a new area in nursery trees and saw logs.

**Over the next few years,
99% of NJ ash trees
will die due to emerald
ash borer infestations**

Ash in New Jersey Facts

- Forests contain 24.7 million ash trees
- 24% of all forested land contains ash
- Ash is found in forests throughout the state, but concentrated in northern New Jersey
- Ash has been commonly planted as a street and landscape tree throughout the state

Managing Your Ash Trees

For Landowners

EAB is in New Jersey. Plan for EAB now if you have ash. Know what's at risk: how much ash you have, its size and quality, and where it's located. Consider the ecological, aesthetic, and economic value of your ash, your tolerance of risk, and your objectives for ownership.

Forest Management Plan

If your land is enrolled in Farmland Assessment or the Forest Stewardship Programs, you must follow your approved forest management plan or an approved amendment.

Contact your consulting forester if you wish to change your planned activities, treatment schedule, or management objectives. Remember that the state forester needs to approve any changes before the management activity begins.

With an approved forest management plan that addresses EAB, you can salvage and restore ash in riparian areas when they follow the prescribed Best Management Practices.

Reassess your plan if EAB is detected in or near your county. To date, EAB has been found in Somerset, Mercer and Burlington Counties. The threat of imminent tree mortality increases when EAB is within 10 miles of your property.

Salvaging Ash Logs

Work with a consulting forester or Certified Tree Expert to get the most from your forest. Studies have shown that owners who use professional forestry services before they cut make more money and are more satisfied with the results than owners who sell timber on their own.

More information www.myhealthywoods.nj.gov

For Municipalities

If your municipality or county currently has an approved Community Forest Management Plan and ash is a major component of your community's forests along streets or in parks, consider including a section in your plan that addresses your community's response to EAB. Contact a Certified Tree Expert for assistance.



EAB infested ash wood

Municipalities with ash trees should:

- Conduct a tree inventory: know the size, health status, and where ash trees are located
- Begin to remove ash trees that are in decline and replace with non-host species
- Identify high value ash trees that you would like to treat to protect them from EAB
- Determine how infested ash tree removals be handled
- Identify a contact for EAB management issues (i.e.; Shade Tree Commission, Department of Public Works, Environmental Commission)
- Plan for restoration efforts with non-host species

More information on the community forestry management plan program
www.communityforestry.nj.gov

More information on the emerald ash borer
www.emeraldashborer.nj.gov

Take action

Identify ash trees. Ash species have opposite branches and leaves and a compound leaf with 5-11 leaflets. The bark has a unique diamond-shaped ridge bark on older trees, but younger trees may have smoother bark.

Monitor your ash trees for EAB, you will know when the risk of mortality becomes urgent. Look for the dying branches at the top of the tree, woodpecker damage, galleries under the bark, D-shaped holes, green adult beetle, and sprouting.

Spread the message, "Don't Move Firewood." Visitors who bring infested firewood to second homes or campgrounds near you put your trees at risk. Talk with neighbors and campground owners in your community.

Report EAB sightings to the NJ Department of Agriculture. Collect and/or photograph any suspect insects and larvae. Note that several insects look similar to the EAB.



New Jersey EAB Task Force



More information

www.emeraldashborer.nj.gov

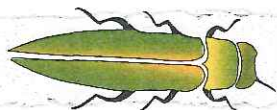
Report sightings to Department of Agriculture
State Forestry Services Forest Health

609.406.6939

609.984.3861

Info from USDA
Look-alike beetles

www.stopthebeetle.info
www.nyis.info/index.php?action=identification



Assess Ash Trees for Emerald Ash Borer

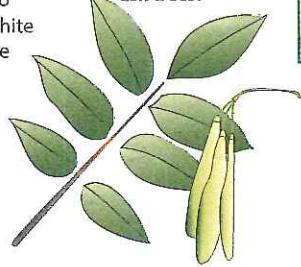
START



Please note: emerald ash borer also infests white fringetree

Do you have ash trees?

- Compound leaves with 5-9 leaflets
- Seeds are samaras in clusters in August
- Opposite Branching



YES

Are your trees in good condition?

- Healthy and vigorous
- Has more than 1/2 its leaves
- No signs of insect damage

YES

Are your trees in a good location?

- Enough room to it to grow to over 50' tall
- Enough room for crown to spread over 45'

YES

- Will hit overhead utility lines at 50' tall
- Will hit side obstructions with crown spread of 45'

not sure
NO

Is the circumference of the tree more than 60"?
(Measure at 4.5 feet from the ground.)

YES

NO

Treat & Monitor

Call a Tree Professional to apply a preventative treatment to your ash tree with a circumference less than 60".

Timing April 1 - May 15
Treatment Soil drench (1.47% imidacloprid)
Precautions Follow label directions
Reapply Yearly (as long as EAB are active)

Find a NJ Certified Tree Expert:
www.NJTreeExperts.org

Get at least two estimates and ask for insurance and references



NO

Your trees are not susceptible to emerald ash borer infestation. This invasive pest only targets ash species.

NO

- Unhealthy, planted on poor sites
- Missing more than 1/2 its leaves
- Exhibits insect damage, split bark and/or woodpecker damage

Remove

Call a Tree Professional to:

- Remove at-risk trees
- Remove infested trees

Find a NJ Certified Tree Expert:
www.NJTreeExperts.org

Get at least two estimates and ask for insurance and references

Evaluate

Call a Tree Professional to:

- Treat trees larger than 60"
- Evaluate tree health or site

Find a NJ Certified Tree Expert:
www.NJTreeExperts.org

Get at least two estimates and ask for insurance and references

No Action

Minimally, identify your ash, and monitor them. Even if you take no action, your ash trees are still susceptible to emerald ash borer infestations. Once infested, your tree will become weak and may even be a hazard to your home or family.

learn more:

www.emeraldashborer.nj.gov

